

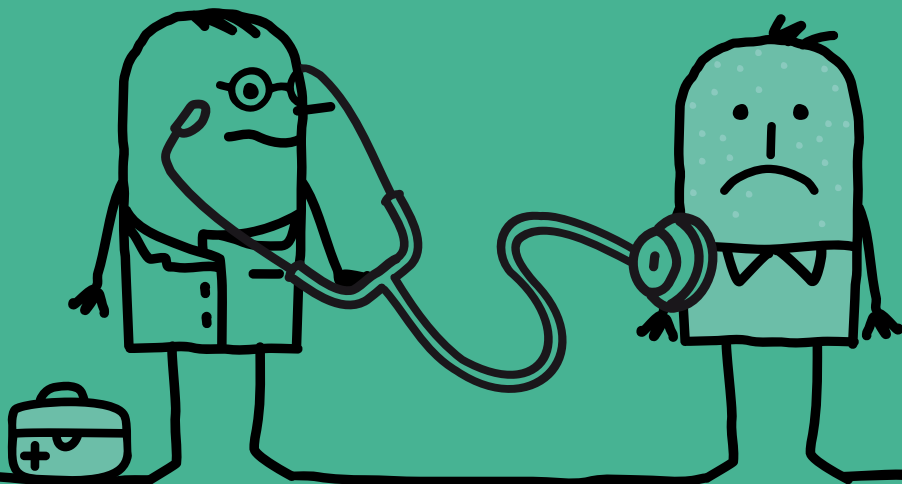
# Benefit Changes

ARE YOU PREPARED?

## 6. Incapacity Benefit



The Government is making big changes to welfare benefits. **Find out how the changes affect you.**



## Question

What are the changes planned for Incapacity Benefit?

## Answer

- The Department for Work and Pensions are carrying out a national exercise to reassess everyone on Incapacity Benefit.
- People will be transferred onto either Employment and Support Allowance (ESA) or Jobseeker's Allowance (JSA).

## Question

How could the change affect me?

## Answer

- People who are moved onto Employment and Support Allowance who are considered to be seriously ill or disabled will be put in the 'support' group and will receive a higher level of benefit. They will not have to take part in any work related activity as a condition of receiving benefit.

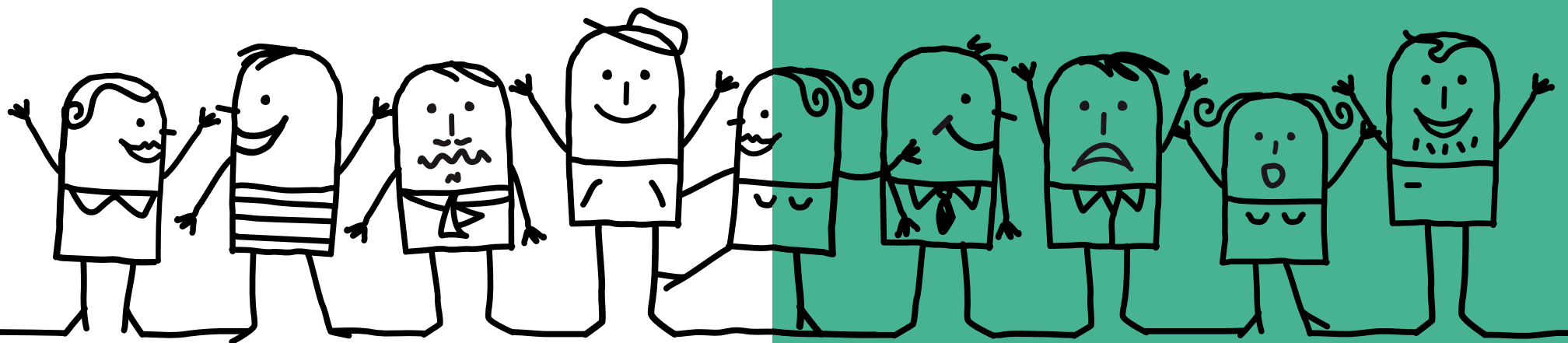
- Everyone else who is moved onto Employment and Support Allowance will be placed in the 'work related activity' group and considered as having limited capability for work. If you are placed in this group you will have to take part in work related activity as a condition of receiving benefit.
- People who are found to be fit for work will be invited to claim Jobseeker's Allowance.

## Question

What happens if I disagree with the Department of Work and Pensions assessment?

## Answer

There is an appeal process and if people find themselves in this situation they should make a claim for Jobseeker's Allowance while the appeal is considered.



# Who can I talk to about the benefit changes?

**DWP Helpline:**..... **0845 6057 064**

**Citizens Advice Bureau:**..... **0844 4111 444**  
(landline)

**0300 3300 650**  
(mobile)

**Housing and Council Tax Benefit:**..... **01709 336065**

